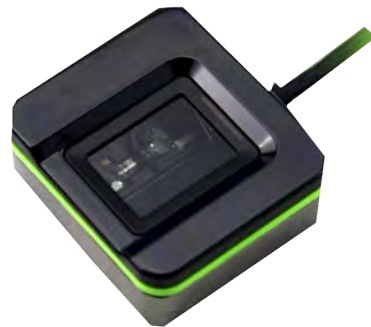


# Fingerprint Scanner FPS-SID

## Unique Design & High Performance

The FPS-SID fingerprint scanner has the advanced optical sensor and state-of-the-art design. It captures high-quality fingerprint images by 2 Megapixel camera and has the superior ability to recognize fake fingers. The FPS-SID scanner is the most comfortable and affordable desktop enrollment and identification device on the world biometric market.



## Specification

- Sensor Type: optical
- Touch Surface Area: 16.5\*23 mm
- Image Capture Area: 15.24\*20.32 mm (FAP20)
- Image Size: 300\*400
- Resolution (dpi): 500
- Interface: USB 2.0, compatible with USB 1.1
- Operating systems: Windows XP/ Vista/7/8/10 (32/64 bit), Android
- Supply voltage: 5V, supplied by USB
- Operating Environment: -20 °C ~ +50 °C; 90% r.h.
- Finger rotation: 360°
- Dimension: 49x44x20.1 mm (L\*W\*TH)

## Features

- Stable operation under strong light
- Support anti-fake fingerprint function
- Large fingerprint capture area and high image performance
- Quick recognition of dry, wet and rough fingers
- High Speed USB 2.0
- Low Power Idle Mode
- Available SDK for development

## Desktop Connection

